



## **PREMIER LINE BINS**

**TOTE® Systems Premier Line Bins** are the best we have to offer. Meeting or exceeding cGMP standards, they are manufactured exclusively with vertical weld seams which reduce sanitation concerns and promote improved product flow. TOTE® bins are an efficient, cost effective method of handling dry solids. The ability to dose, store, blend, transport and discharge from a sealed container minimizes cross contamination, reduces operator exposure and helps maintain batch integrity and control.



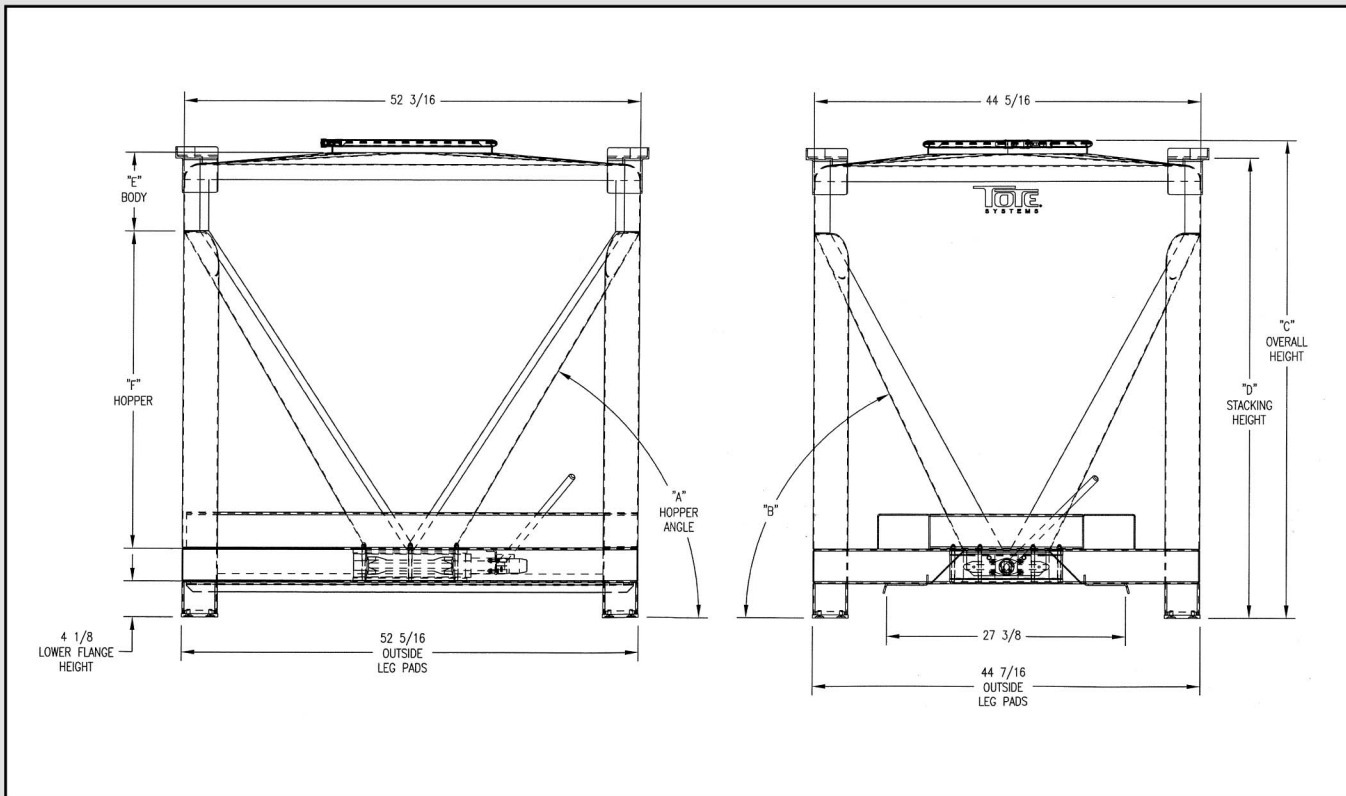
### **STANDARD FEATURES**

- Pallet jack guides
- Fork lift channels
- Anti-static foot pads
- 44" x 52" (1125mm x 1325mm) footprint
- 2B material finish body, inside/outside
- #4 finish on base structure
- Interior welds ground smooth and flush to mirror finish
- Exterior welds as laid and strip buffed
- TIG weld • 18" manway • Leverlock clamp rings
- Silicone manway gaskets • 316 stainless steel
- 10" butterfly valve outlet • Serial number labeling
- 60° hopper angle

### **OPTIONS**

- Stacking of bin • Mass flow design • Special hopper angle
- Lifting eyelets • Cardholders • Lid or bin mounted fittings
- Discharge valve dust cover, automatic sliding or manual removable cover
- Top valve dust cover, automatic sliding or manual removable cover
- Sight glass • Venting • Casters • Other alloys available
- Custom footprint dimensions as required up to 60" x 60"
- COIRA, Baronshire or TOTE® valves. 6", 8", 10", 12" or customer specified
- #4, 320 grit, mirror material and weld finishes
- Special "tagging" information
- "Non-product contact" welds ground smooth





SIZE	A	B	C	D	E	F	HOPPER CAPACITY
30 CU FT	45°	51°	45-1/2	43-1/2	15-3/8	20-13/16	11.45 CU FT
62 CU FT	45°	51°	69-1/2	67-7/16	39-5/16	20-13/16	11.45 CU FT
78 CU FT	45°	51°	81-1/2	79-13/32	51-9/32	20-13/16	11.45 CU FT
98 CU FT	45°	51°	96-3/8	94-3/8	66-7/32	20-13/16	11.45 CU FT
30 CU FT	60°	65°	55	52-29/32	9-1/8	36-13/32	19.94 CU FT
62 CU FT	60°	65°	78-7/8	76-27/32	33-1/16	36-13/32	19.94 CU FT
78 CU FT	60°	65°	90-7/8	88-13/16	45-1/32	36-13/32	19.94 CU FT
98 CU FT	60°	65°	105-3/4	103-3/4	60	36-13/32	19.94 CU FT

\* Shown with 30 cu ft bin and 60° hopper (DIMS based on 10" valve)  
All dimensions in inches